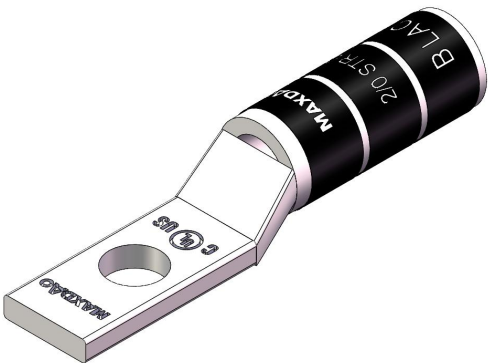


Copper Lug, AWG2/0#, one hole 3/8", with inspection window,Narrow,Black

- Copper cable lugs are designed for connecting copper cables, coils and Bus-bars.
- Copper Tube Terminals between 6mm<sup>2</sup> & 800mm<sup>2</sup> have bell entry to ensure easy entry even for flexible conductors.
- Incorporates inspection window to check the correct cable positioning.
- "colour code" help choose the right connector, the colour name is also printed in order to avoid problems for those who are colour-blind.
- Narrow tongue design for limited space applications.



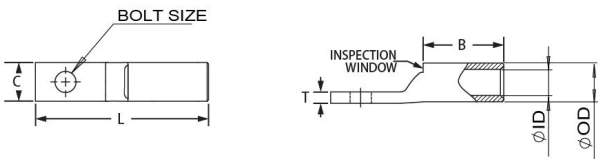
Product Classification

Item Number	6009368
Part Number	-
Detail Description	Copper Lug, AWG2/0#, one hole 3/8", with inspection window,Narrow,Black

General Specifications

Colour Code	Black
Material	Copper
Tongue Type	Narrow
Tongue Angle	Straight
Surface	Tin-plated
Inspection Window	With inspection window

Dimensions



Bolt Size	3/8 in   10.2 mm
Tang Width (C)	0.72 in   18.3 mm
Barrel length (B)	0.93 in   23.5 mm
Overall length (L)	2.48 in   63.0 mm
Inner diameter (ID)	0.45 in   11.4 mm
Outer diameter (OD)	0.56 in   14.3 mm

Electrical Specifications

Rating - Maximum Voltage	35KV
--------------------------	------

<b>Environmental Specifications</b>	
Operating Temperature	-40 °C to +90°C (-40 °F to +212 °F)
Storage Temperature	-40 °C to +80 °C (-40 °F to +176 °F)
<b>Packaging and Weights</b>	
Included	Lug
Packaging Quantity and UOM	1 pcs
Piece Weight	0.116 lb   0.053 kg
<b>Certifications and Certificated</b>	
ISO 9001:2015	Designed, manufactured and/or distributed under this quality management system
RoHS	Compliant
UL	Compliant

