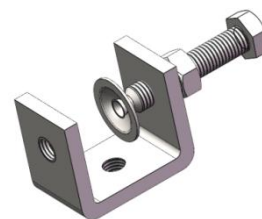


## Angle Adapter, M8 tapped hole

- Manufactured by stainless steel
- Excellent for outdoor & indoor use
- Install with M8 Threaded rod



### Product Classification

Material Code	6000441
Part Number	-
Status	Active
Detail Description	Angle Adapter, M8 tapped hole

### General Specifications

Material Type	Stainless steel 304
Color	Silver
Attachment Mounting Hole	M8 tapped

### Dimensions

Width	24 mm   0.944 in
Length	33 mm   1.299 in
Thickness	4.6 mm   0.181 in
Hex Bolt Size	M8 X 45 mm

### Environmental Specifications

Corrosion Resistance	≥24 hours in salt spray chamber, base on IEC 60068 -2-11
----------------------	--

### Packaging and Weights

Height, packed	200 mm   7.874 in
Width, packed	200 mm   7.874 in
UOM	Pcs
Packaging	Bag
Weight, gross	0.098 kg   0.216 lb

### Certifications and Compliance

ISO 9001:2015	Designed, manufactured and/or distributed under this quality management system
RoHS	Compliant